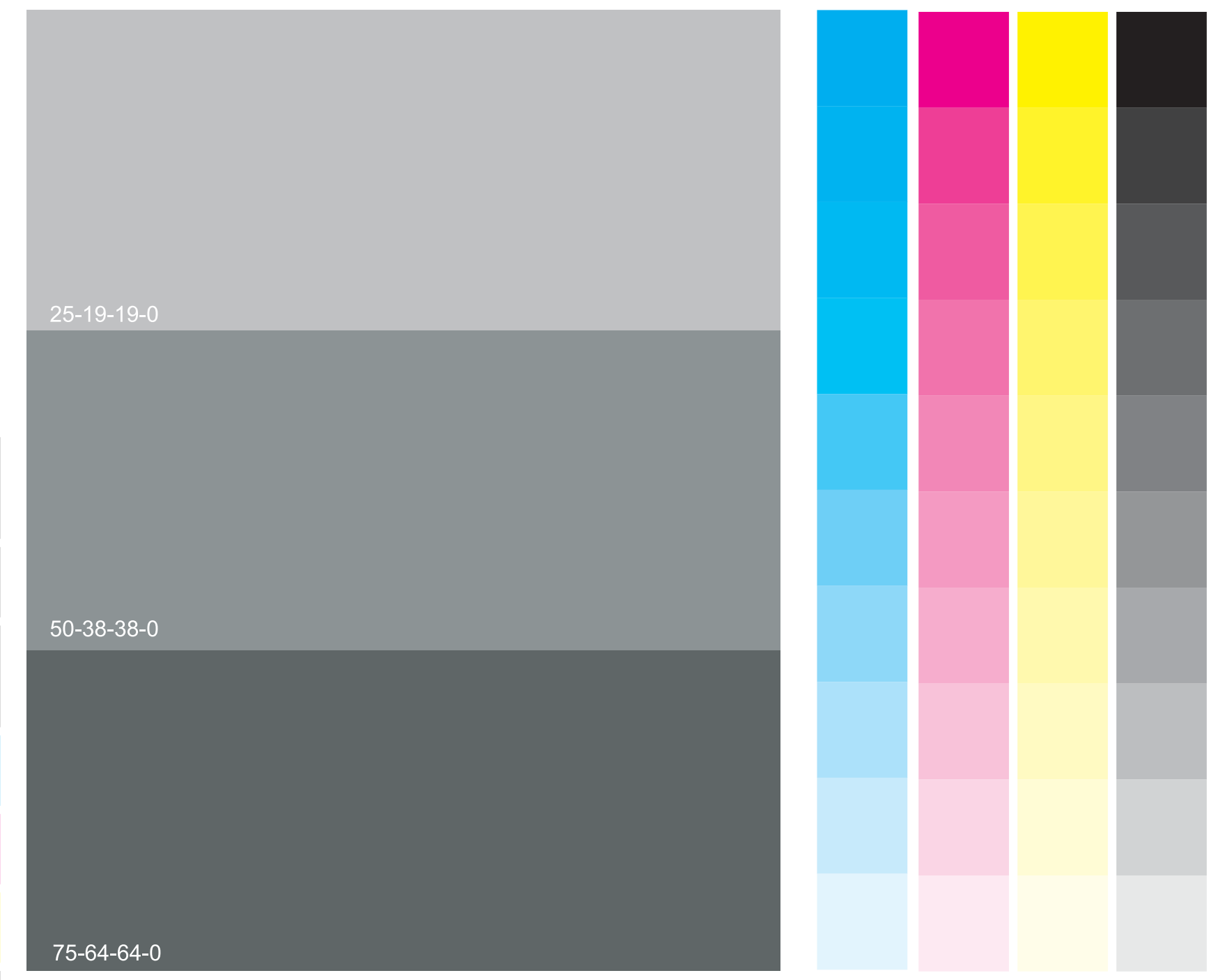
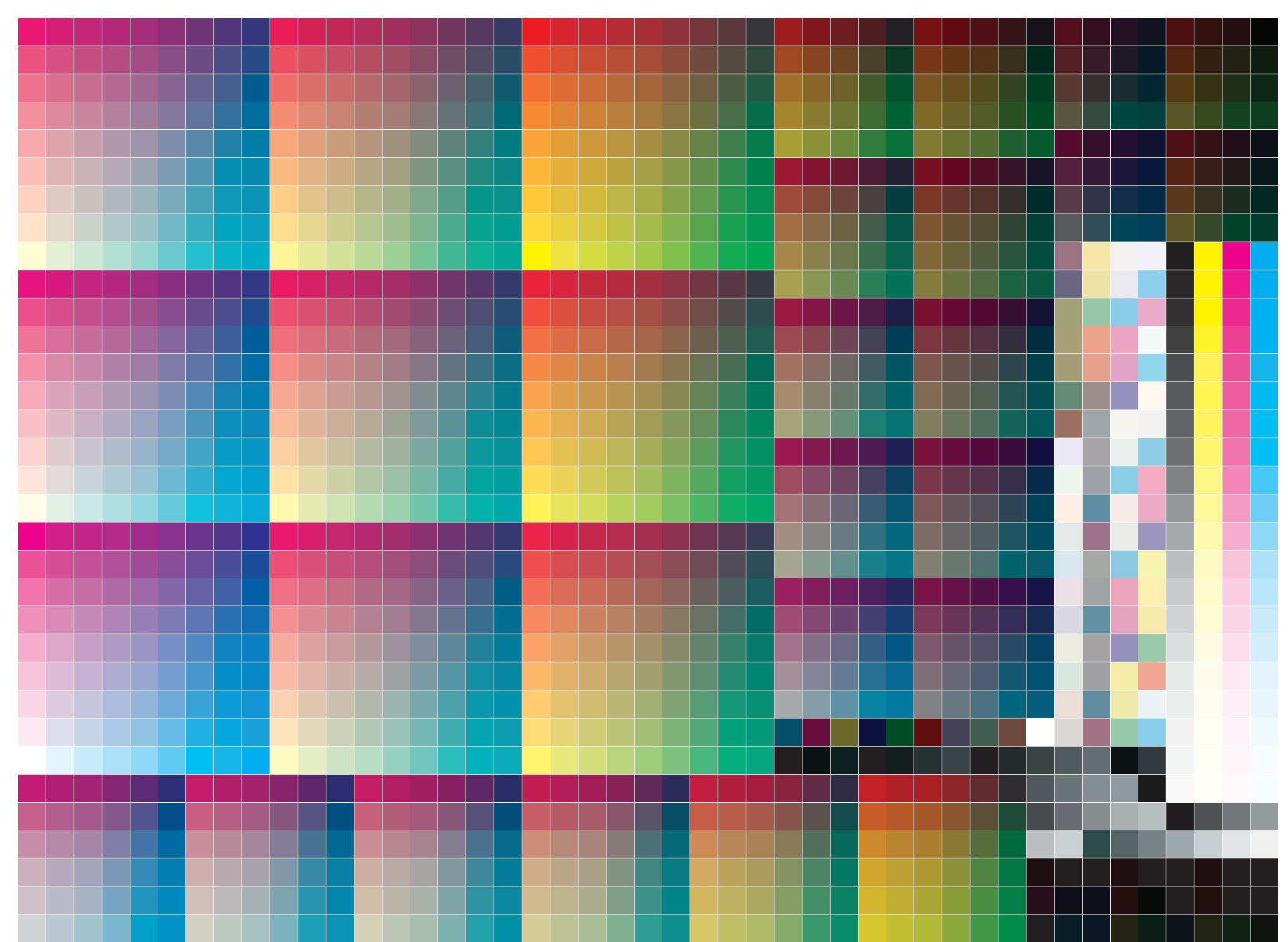


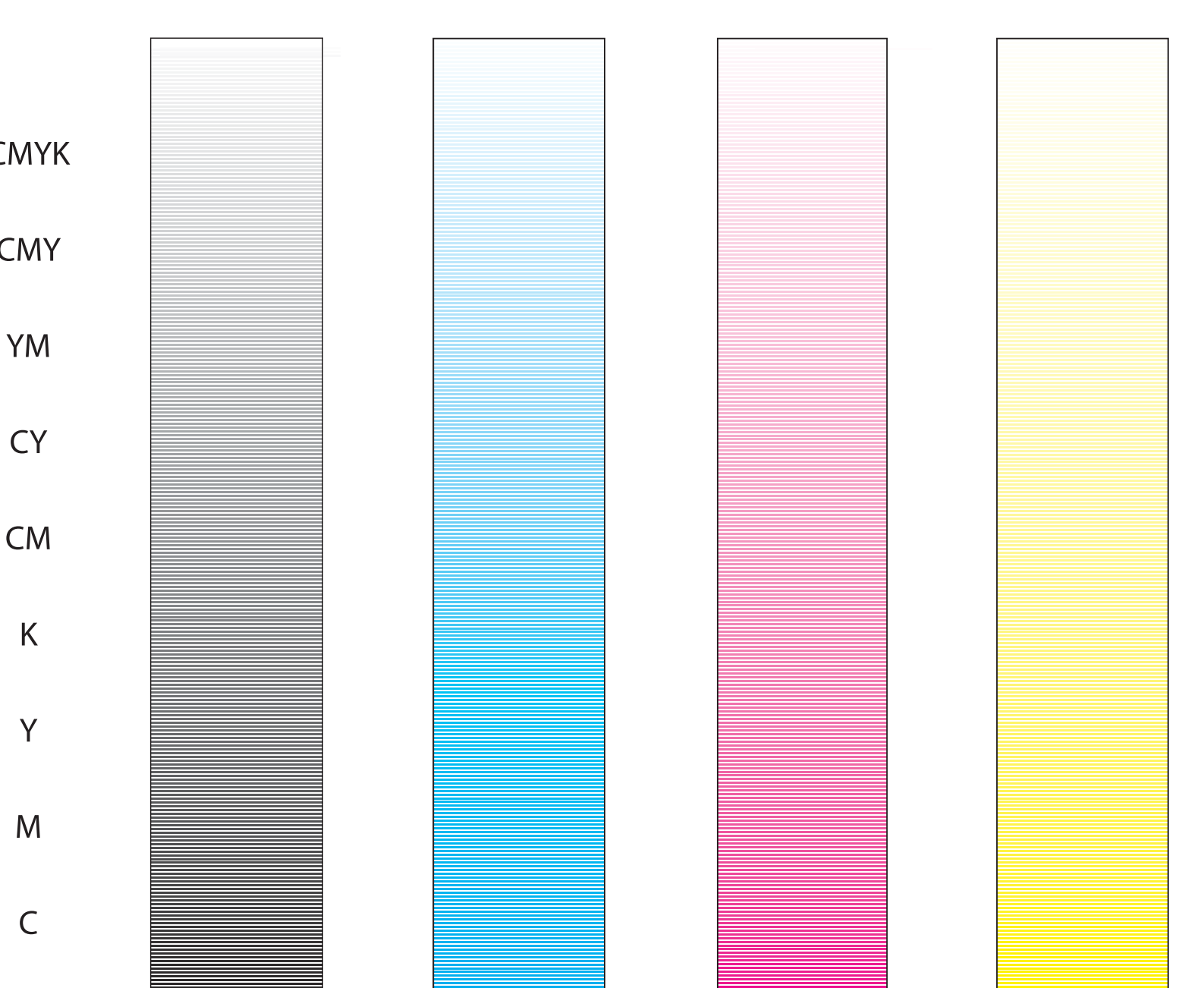
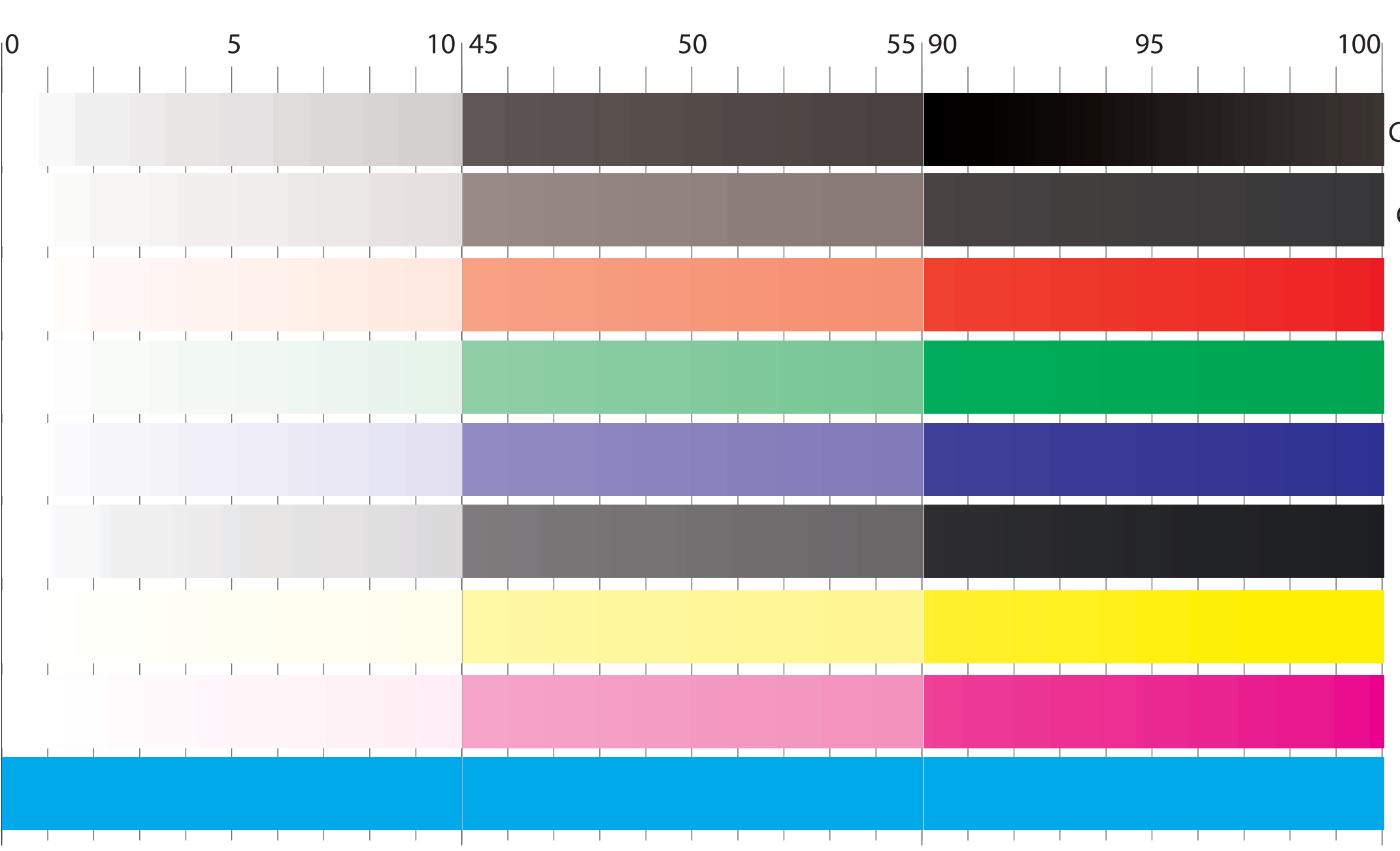
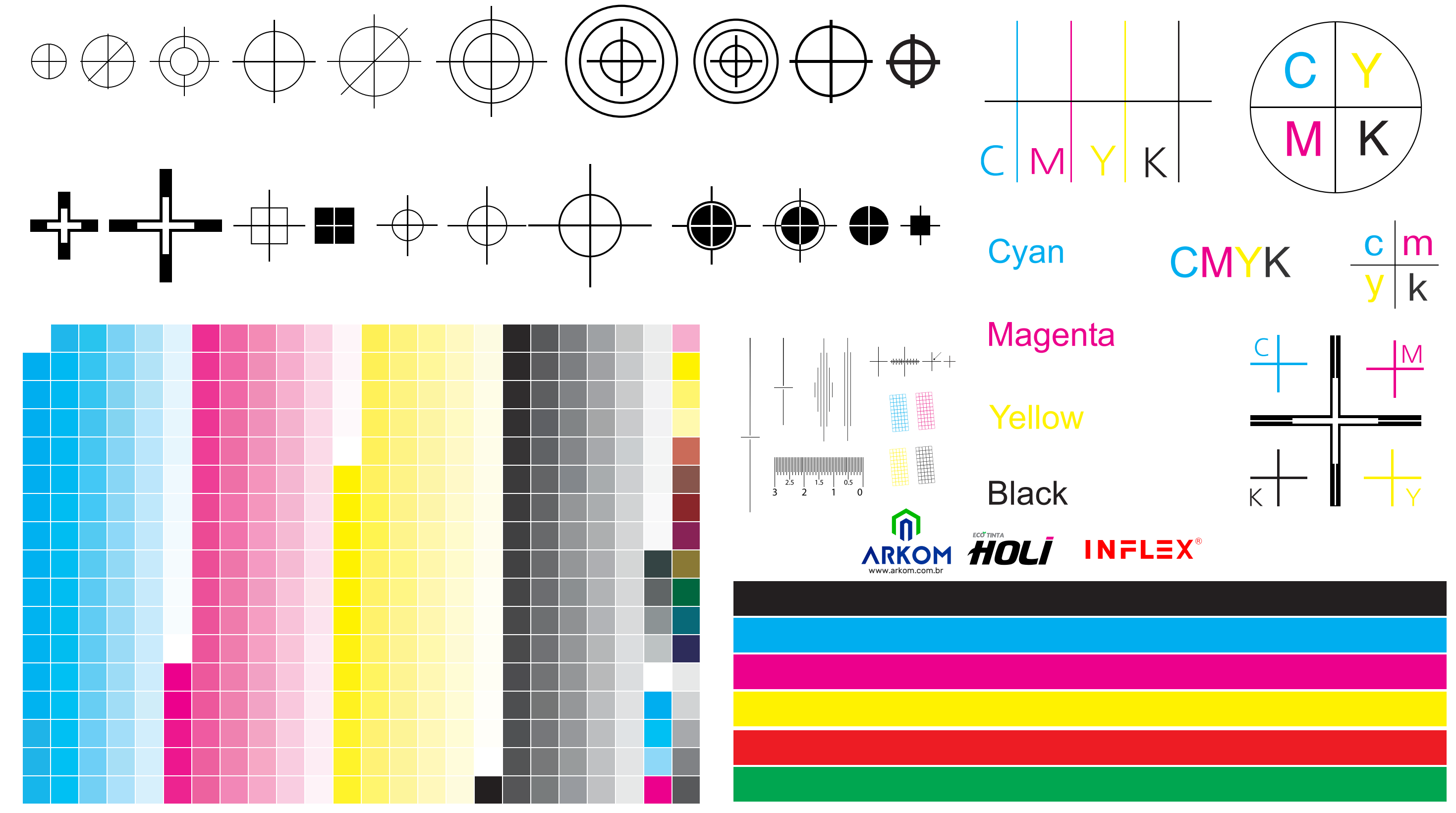
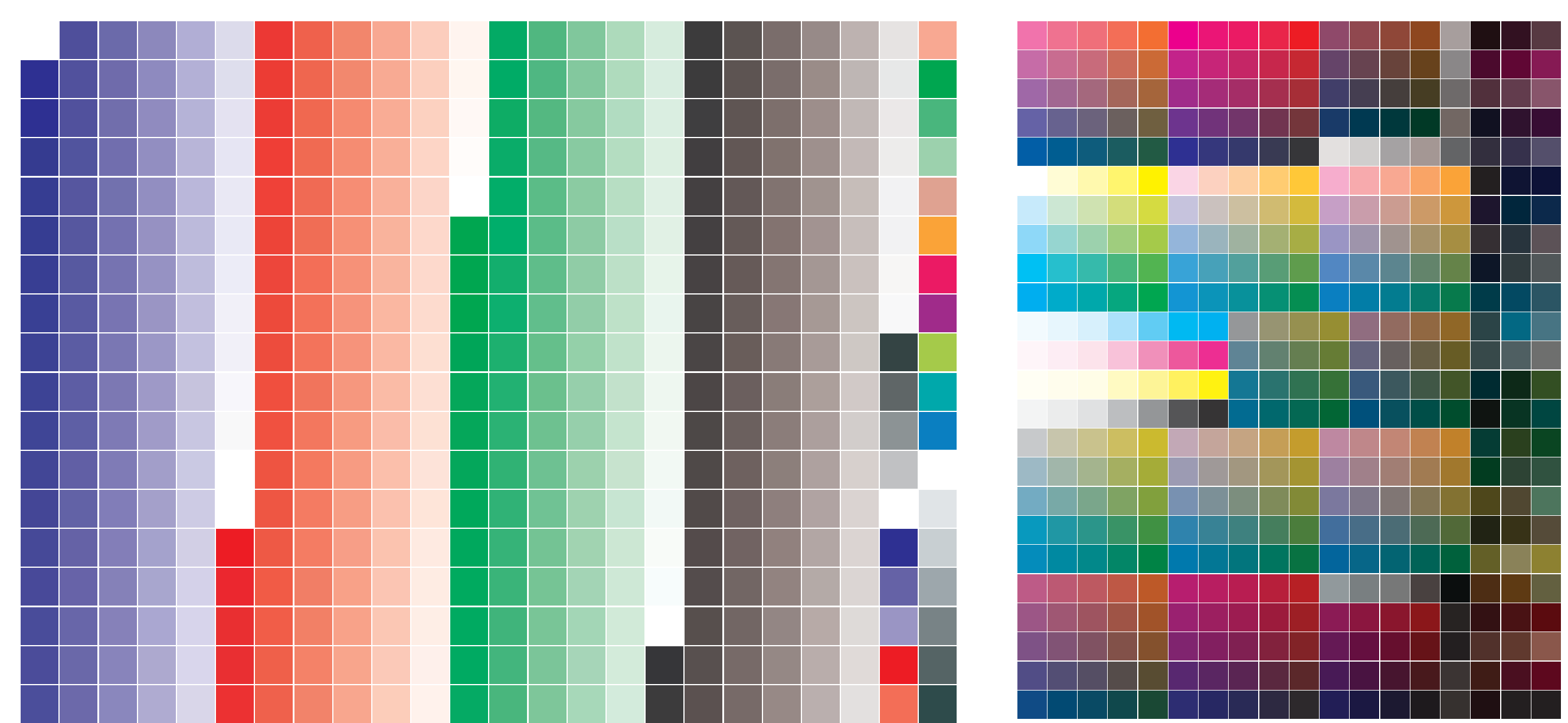
Color calibration data table with columns for color values (0-100) and rows for different color channels (K, Y, M, C).



Color calibration data table with columns for color values (100, 98, 96, 94, 92, 90) and rows for different color channels (c1-c10, m1-m10, y1-y10, k1-k10).



Color calibration data table with columns for color values (2%, 3%, 5%, 8%) and rows for different color channels (98, 97, 95, 92).



Color calibration data table with columns for color values (5%, 25%, 50%, 75%, 90%, 100%) and rows for different color channels.

